

3D Front Profile

NOT TO SCALE

-8 female boss for breather to catch-tank

-8 female boss for gearbox breather

Filler & Breather recessed to avoid oil flow

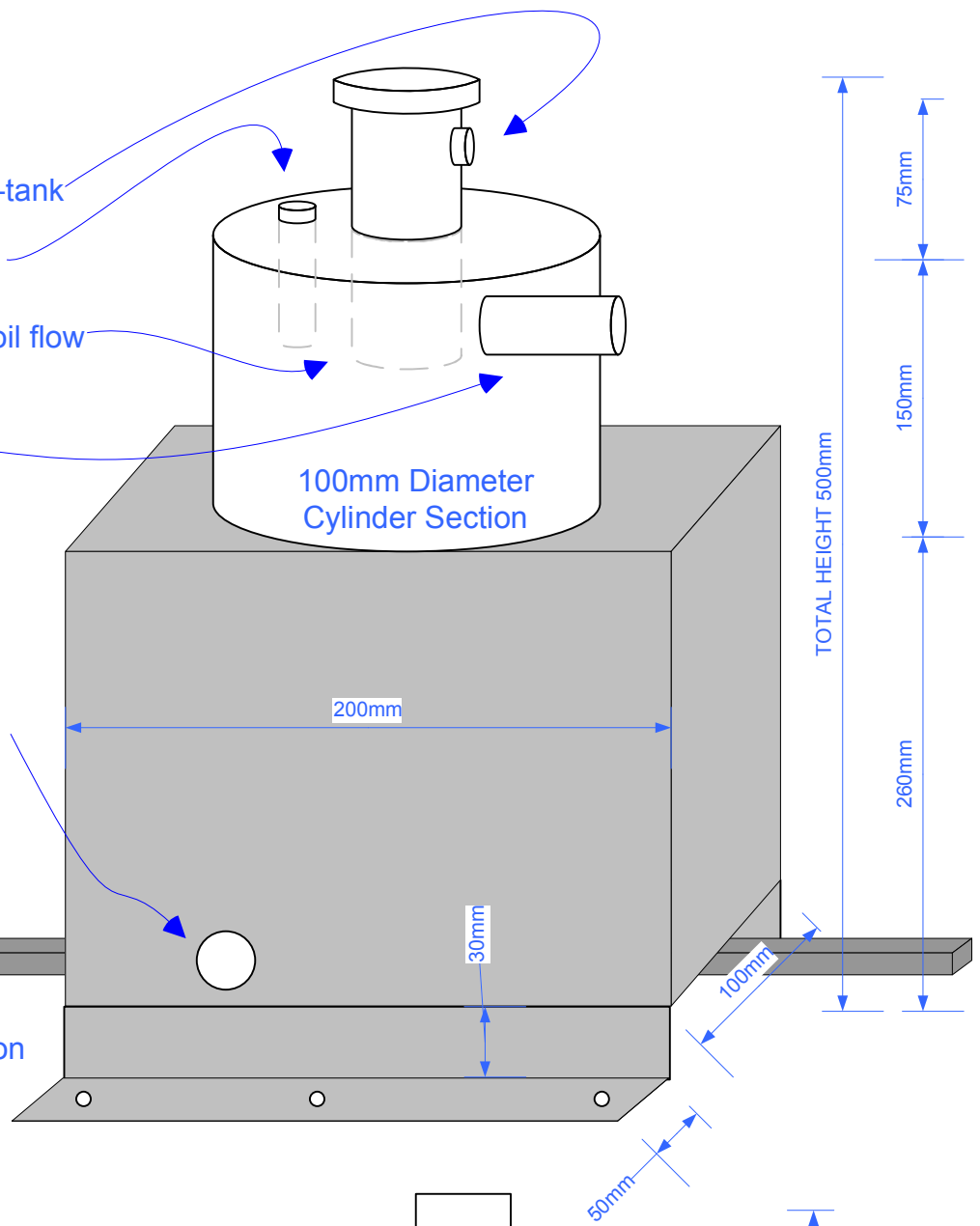
-12 female from pump/oil cooler
Installed for optimum oil swirl

-12 female return to sump
Optimised for surge resistant pickup

Car Chassis Rail

Capacity Calculation:

Fill to the top of the rectangle section
5.2 litres
Cylinder capacity: 1.1 litres



Side Profile

NOT TO SCALE

-8 female boss for breather to catch-tank

-12 female from pump/oil cooler
Installed for optimum oil swirl

-12 female return to sump
Optimised for surge resistant pickup

Legs allow secure bolting down of the
Tank to the car floor. Bolted through rubber.
Ignoring rubber, legs should raise tank base
From floor by 30mm

Car Alloy Floor Panel

Car Chassis Rail

