

3D Front Profile

NOT TO SCALE

-8 female boss for breather to catch-tank

-8 female boss for gearbox breather
LOWER than other breather

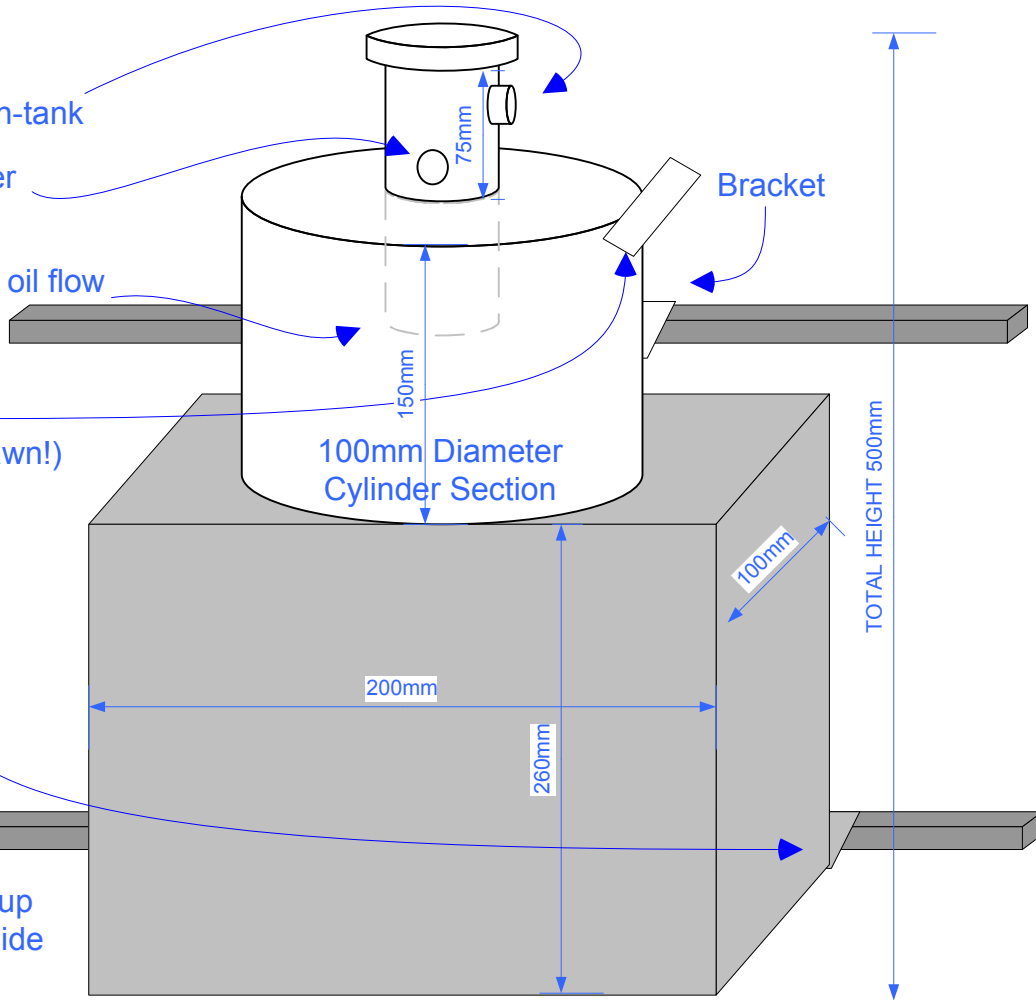
Filler & Breather recessed to avoid oil flow

-12 female from pump/oil cooler
Installed for optimum oil swirl
it points BACKWARDS (Badly Drawn!)

Note the bottom of tank extends
Backwards to form bracket

Car Chassis Rail

-12 female return to sump
Optimised for surge resistant pickup
Cannot be seen, in centre of left side



Capacity: Fill to the top of the rectangle section: 5.2 litres. Additional Cylinder capacity: 1.1 litres

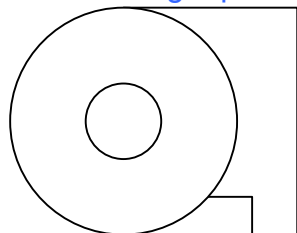
Side Profile

NOT TO SCALE

Bracket welded to circular tank to
Provide fixing to top chassis rail

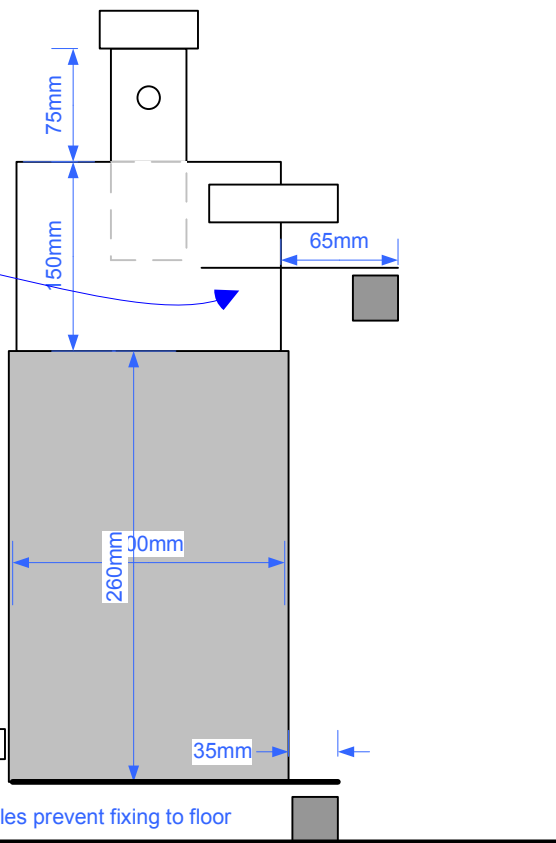
CRITICAL measurement from very
Bottom to the Top bracket

Top profile showing top bracket



Car Alloy Floor Panel

Obstacles prevent fixing to floor



Please baffle as appropriate. If any measurements don't work, give me a call!